

EnGenius Cloud

Solution Brochure

Visualize Your Networks with AI-driven Cloud

EnGenius Cloud is built on top of the most advanced cloud computing technology. Scalable and AI-ready, the robust and dynamic cloud computing infrastructure helps you work smarter on your network with important analytics and visualization tools.

Why EnGenius Cloud

Resolve the pain points of traditional networks



Easily manage multiple sites



Precisely debug the networks



Remotely manage device firmware



Simultaneously update distributed devices

The Smart Cloud Helps You Achieve More

Artificial intelligence (AI) enables EnGenius Cloud to predict issues before they occur and provide accurate recommendations to proactively improve performance. EnGenius Cloud's Advisory Board uses AI to continuously analyze networks and report potential problems, often before issues occur.



Easy Deployment



Smart Management



Visualized Insights



Next-Generation True Cloud Infrastructure for High Stability and Scalability



Serverless

The Cloud is built on the server-less infrastructure without server boundaries



FaaS

Each function is scalable and works seamlessly with dynamic allocation



Reliability

The service-level agreement guarantees 99.99% availability for your network

Easy Deployment

Plug & Play Auto-Provisioning

EnGenius Cloud lets you deploy multiple sites with quick registration and configuration, available on your cloud network.



PLANNING SITE

1

Register devices with web or mobile app

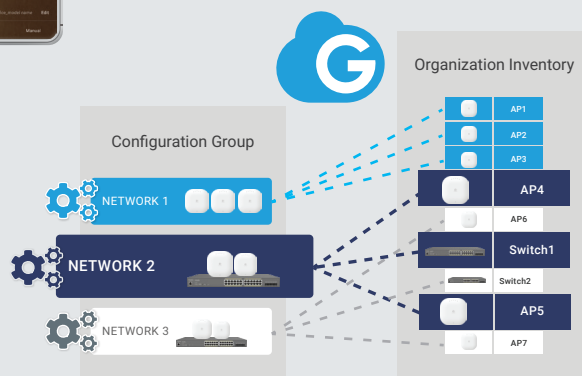
Scan a QR code with your device to register it to company inventory on the EnGenius Cloud.



2

Assign devices to network groups

Creating networks with predefined configuration profiles for Cloud managed devices under the same network group, and then apply this configuration automatically to new devices



DEPLOYMENT SITE

3

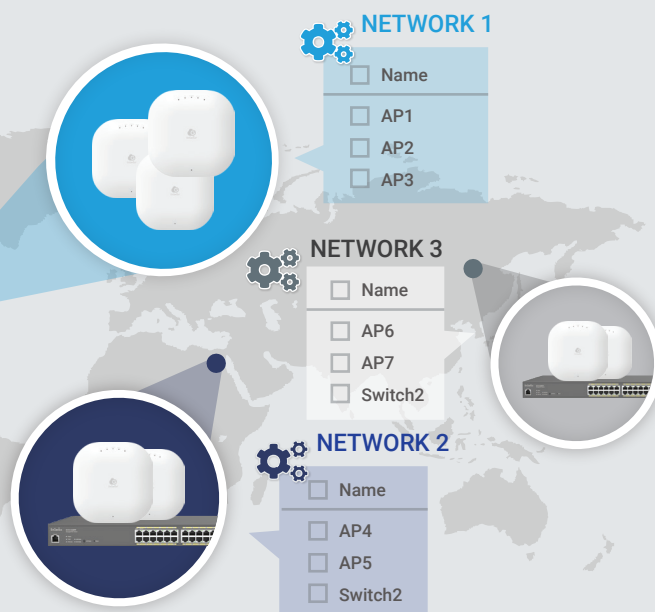
Unbox devices and connect to your network

Once plugged in, EnGenius Cloud will push the proper configuration to the device and work as intended.

4

Multiple sites deployment made easy

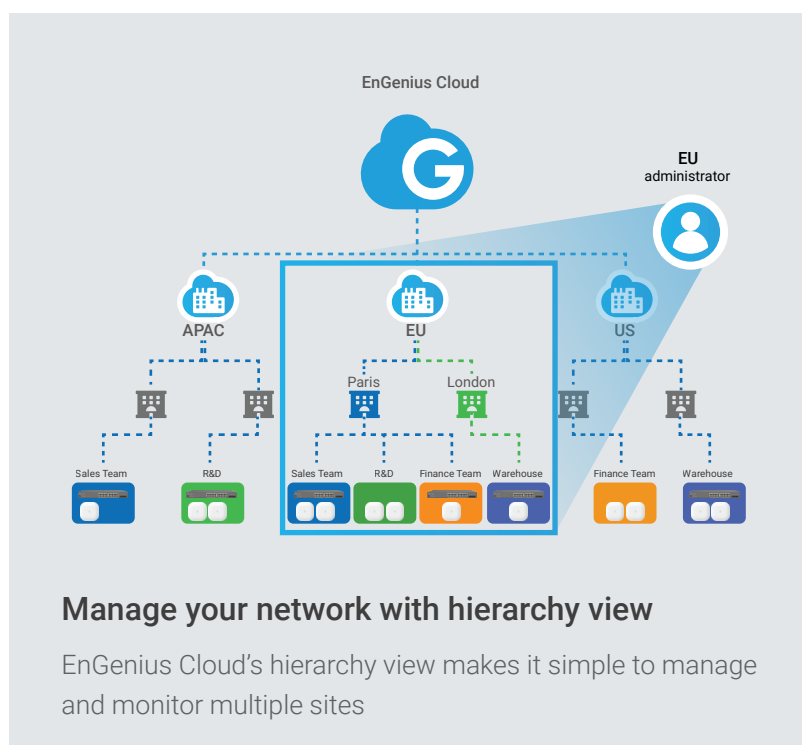
With EnGenius Cloud, deploying and managing multiple sites in different timezones and with various network policies is easy.



Smart Management

Work Smarter with EnGenius Cloud

EnGenius Cloud makes it simple to manage and monitor multiple sites with hierarchy view, gather real-time device information, and many other benefits to fit your business.



Scheduled firmware upgrade for multiple sites and networks

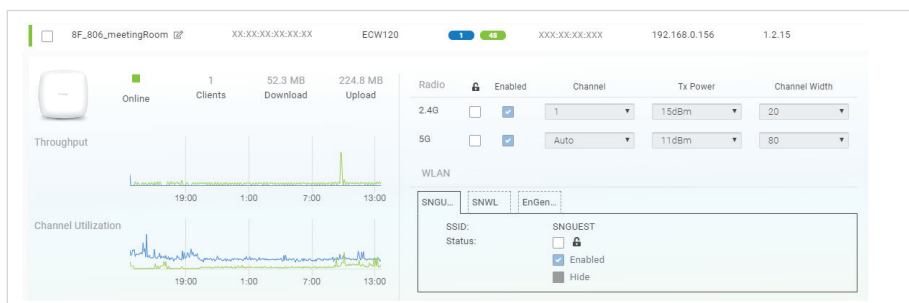
Create firmware upgrade tasks for different groups of devices based on region, local timezone, and other configurations.

User authentication for Wi-Fi access per SSID

EnGenius Cloud offers various authentication methods for different business requirements. You can configure the AAA authentication on the cloud or through a customer's RADIUS server, create a guest Wi-Fi with preset access, or use popular social media authentication methods.

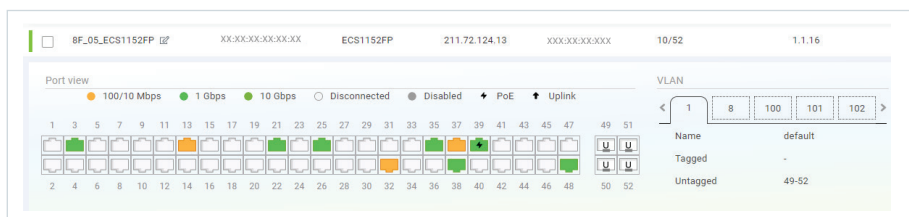
Get access point statuses in real-time

Manage all APs in one place and quick access of current traffic usage and essential configurations.



Detailed view of switch port and PoE status

Check port connection status and PoE utilization in real time, and configure ports of switches on an individual basis.



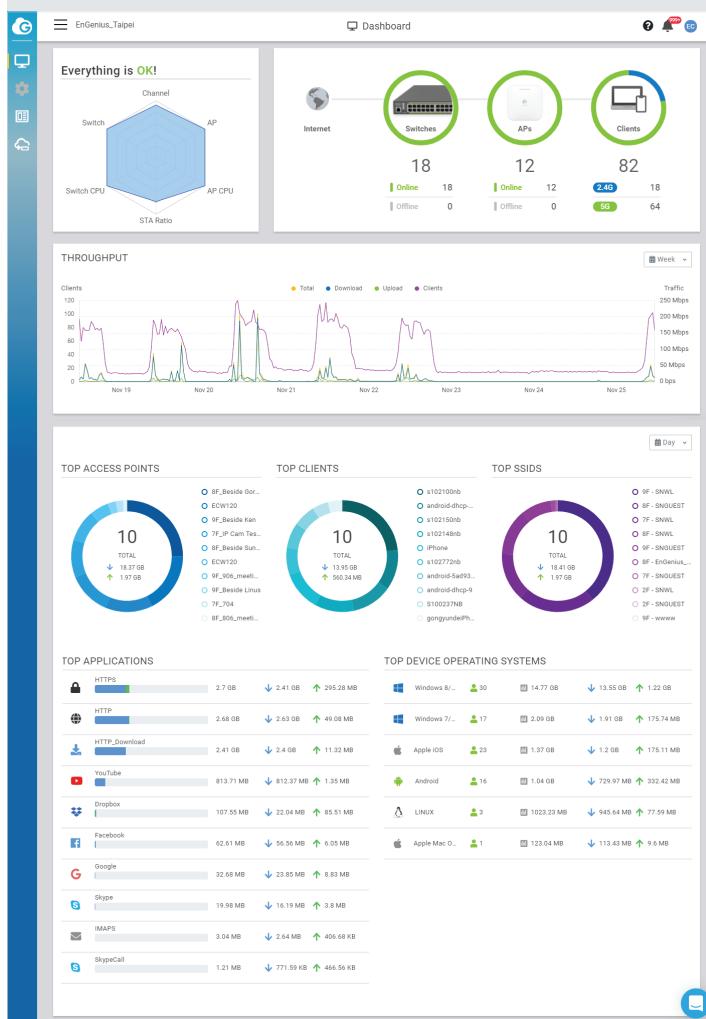
Visualized Insights

Insights from the big Picture Down to the Smallest Detail

EnGenius Cloud always keeps you updated on your networks status. It performs troubleshooting with accurate and feasible active, backed by the latest in AI-driven computing insight.

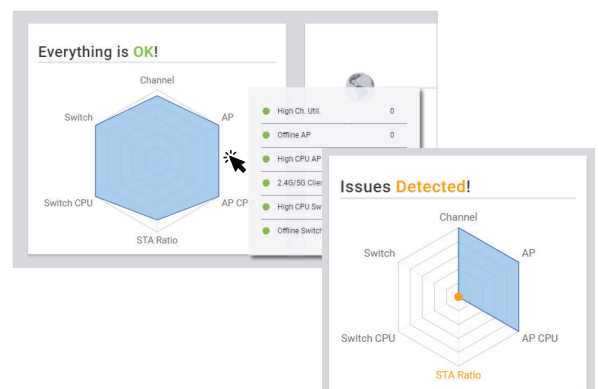
Network health at a glance

EnGenius AI is a web-based management platform on EnGenius Cloud that lets you manage your networks from an intuitive central interface. This feature-rich, easy-to-use management tool makes you work more efficiently. Its holistic assessments of real-time network health assist you to pinpoint potential issues and organize a rapid response.



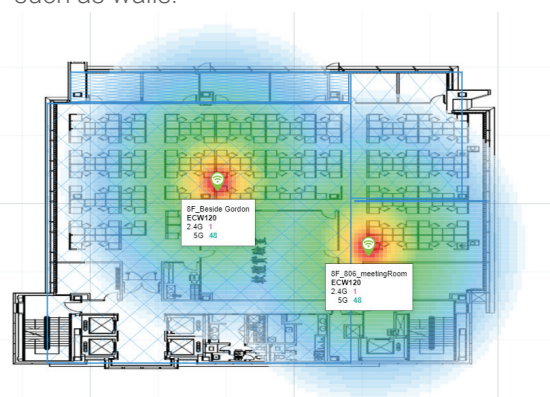
Pinpoint issues with the AI-Driven advisory board

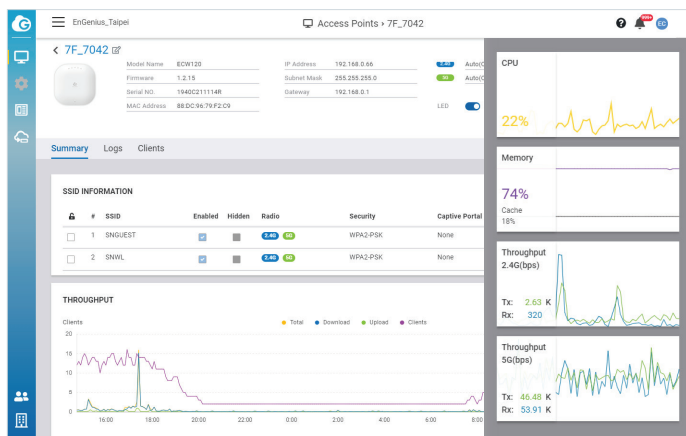
AI-powered alerts and recommendations guide you to the appropriate solution whenever any abnormal situation may occur in your network.



Wi-Fi heatmap visualizer calculates optimal AP placement and signal strength on your floor plan

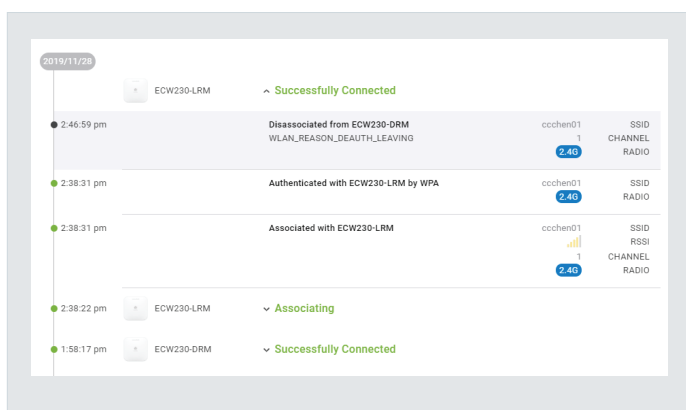
Upload a floor plan and preview your Wi-Fi coverage in simulated conditions with heatmaps that factor in real-world obstacles such as walls.





Supervise devices with real-time metrics

EnGenius Cloud provides the capability to display device performance in real-time. It breaks down key performance diagnostics such as CPU, memory, and throughput to determine the root cause of the current network problem.

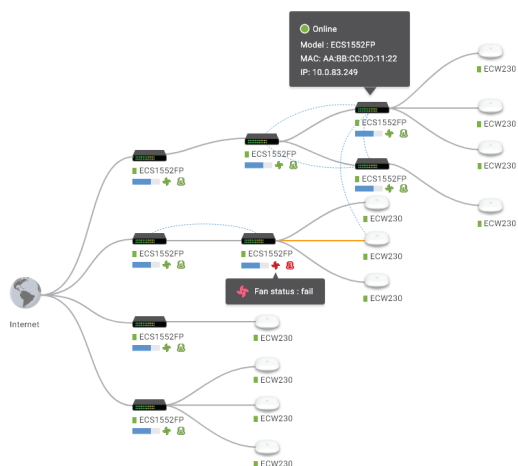


Monitor and troubleshoot with the client timeline

The client timeline provides additional information about issues by analyzing the authentication process between devices. Pull up an entire client history to trace back the time when a network problem may have originated.

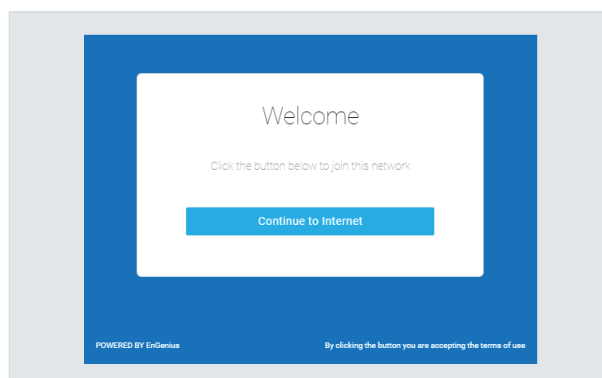
View the real connections of devices with topology view

The topology view displays all the devices managed by EnGenius Cloud and the relationships between network devices. You can see the real-time status of Access Points and switches and check the detailed information of PoE status, IP and MAC address, and throughput.



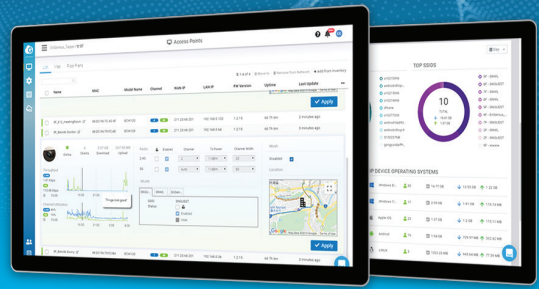
Customized captive portal for guest network

EnGenius Cloud lets you predefine access templates for the guest portal for different business purposes. The captive portal can manage the network permissions, control or separate network traffic, throttle connections, and deliver customized messages for business, all backed by the secure and reliable user authentication.



Explore the Visualized Interface and Features of EnGenius Cloud

EnGenius Cloud provides reliable performance, predictive analysis, and real-time insights to allow companies to focus on growing their business. The enterprise-class features help IT quickly build reliable and efficiently managed networks.



Built on a Foundation to Support Your Business



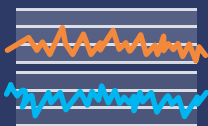
Network Health Center



Counseling Floor Plan



Client Network Timeline



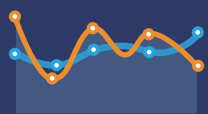
Device Real-Time Diagnostics



AI-Driven Advisory Board



Topology View



Historical Network Report



Layer-7 Apps Dashboard



Management On-the-Go



Captive Portal



Mesh Technology



engenius.ai/cloud

Deploy and Monitor Your Networks On the Go



EnGenius Cloud

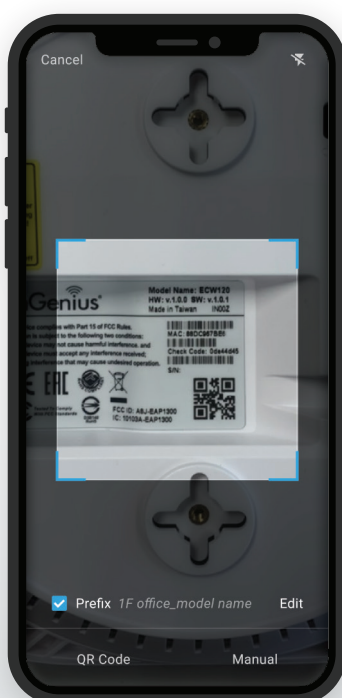
Smart Networking at Your Fingertips

With the EnGenius Cloud mobile app, you can always have full control of cloud-managed switches, access points, and other devices. Get real-time alerts no matter where you are. Easy device deployment, visualized monitoring, and alerts for abnormal network activity available within an intuitive mobile app.



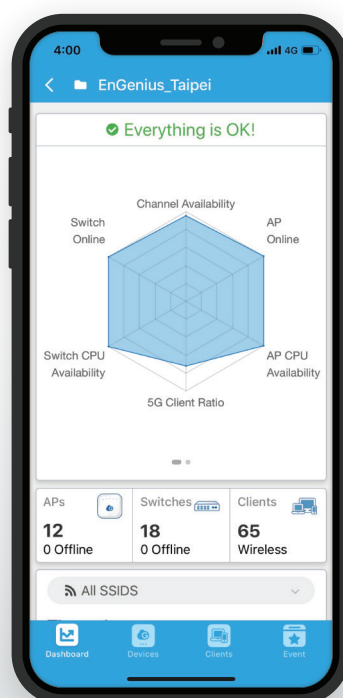
Quick Deployment

Scan devices to register to Cloud



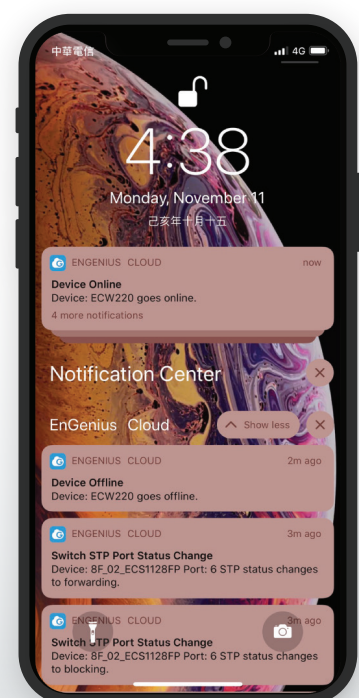
Mobile Monitoring

Troubleshoot wherever you are



Real-time Notification

Warning for abnormal network activity



EnGenius Cloud's Versatile Line of High-Performance Devices






Cloud Managed Products

The EnGenius Cloud device lineup is centrally managed from an intuitive interface. With the latest business technology and a reliable switching platform, EnGenius Cloud boasts a versatile line of high-performance managed network devices, including future-proof Wi-Fi 6 indoor Access Points, Outdoor Access Points with detachable external antennas, and Multi-Gigabit PoE switches with SFP or SFP+ options.








Cloud - Access Points

Access Points






	Indoor				Outdoor
	ECW115	ECW120	ECW220	ECW230	ECW160
					
Wi-Fi Standard	802.11a/b/g/n/ac	802.11a/b/g/n/ac	802.11a/b/g/n/ac/ax	802.11a/b/g/n/ac/ax	802.11a/b/g/n/ac
Radio	2.4 GHz & 5 GHz	2.4 GHz & 5 GHz	2.4 GHz & 5 GHz	2.4 GHz & 5 GHz	2.4 GHz & 5 GHz
Max. Data Rate on 2.4 GHz	400 Mbps	400 Mbps	574 Mbps	1,148 Mbps	400 Mbps
Max. Data Rate on 5 GHz	867 Mbps	867 Mbps	1,200 Mbps	2,400 Mbps	867 Mbps
Radio Chains/ Spatial Streams	2 × 2:2	2 × 2:2	2 × 2:2	4 × 4:4	2 × 2:2
Transmit Power	Up to 17 dBm on 2.4 GHz Up to 17 dBm on 5 GHz	Up to 23 dBm on 2.4 GHz Up to 23 dBm on 5 GHz	Up to 20 dBm on 2.4 GHz Up to 20 dBm on 5 GHz	Up to 23 dBm on 2.4 GHz Up to 23 dBm on 5 GHz	Up to 23 dBm on 2.4 GHz Up to 23 dBm on 5 GHz
Antenna	2 × 3 dBi (2.4 GHz) 2 × 3 dBi (5 GHz)	2 × 5 dBi (2.4 GHz) 2 × 5 dBi (5 GHz)	2 × 3 dBi (2.4 GHz) 2 × 3 dBi (5 GHz)	4 × 3 dBi (2.4 GHz) 4 × 3 dBi (5 GHz)	2 × 5 dBi (2.4 GHz) 2 × 5 dBi (5 GHz)
Power-over-Ethernet	802.3af/at	802.3af	802.3af/at	802.3at	802.3af/at
Ethernet Ports	2 × 10/100/1000 Ethernet Ports (PoE) 1 × 10/100/1000 Ethernet Port (PSE Out)	1 × 10/100/1000 Ethernet Port	1 × 10/100/1000 Ethernet Port	1 × 10/100/1000/2500 Ethernet Port	1 × 10/100/1000 Ethernet Port
Power Consumption(Peak)	11.9W	12W	12.8W	19.5W	12.6W
Dimensions	140 x 90 x 40 mm	161.5 x 161.5 x 41.6 mm	160 x 160 x 33.2 mm	205 x 205 x 33.2 mm	173.6 x 111.2 x 30.3 mm
Mounting	Wall / Ceiling	Wall / Ceiling	Wall / Ceiling	Wall / Ceiling	Pole / Wall
Mobile app (Cloud app)	●	●	●	●	●
Mesh Technology	●	●	●	●	●

Cloud - Network Switches

Switches

Network Switches					
	ECS1008P	ECS1112FP	ECS1528	ECS1528FP	ECS1552
					
Switch Class	Layer 2+	Layer 2+	Layer 2+	Layer 2+	Layer 2+
Gigabit Ports	8	10	24	24	48
Multi-G Ports	0	0	0	0	0
SFP Ports	0	2	0	0	0
SFP+ Ports	0	0	4	4	4
RJ45 Console Port	-	Yes	Yes	Yes	Yes
PoE Capable Port	Ports 1 - 8	Ports 1 - 8	-	Ports 1 - 24	-
Power-over-Ethernet	802.3af	802.3af/at	-	802.3af/at	-
Total PoE Budget	55W	130W	-	410W	-
Form Factor	9.45 (Desktop)	13"1U	19"1U	19"1U	19"1U
Switching Capacity	16 Gbps	24 Gbps	128 Gbps	128 Gbps	176 Gbps
MAC Address Table Size	8K	8K	16K	16K	16K
Dimensions	240 x 105 x 27 mm	330 x 230 x 44 mm	440 x 200 x 44 mm	440 x 260 x 44 mm	440 x 260 x 44 mm

Switches

Network Switches					
	ECS1552FP	ECS2512	ECS2512FP	ECS5512	ECS5512FP
					
Switch Class	Layer 2+	Layer 2+	Layer 2+	Layer 2+	Layer 2+
Gigabit Ports	48	0	0	0	0
Multi-G Ports	0	8 x 2.5G	8 x 2.5G	8 x 10G	8 x 10G
SFP Ports	0	0	0	0	0
SFP+ Ports	4	4	4	4	4
RJ45 Console Port	Yes	Yes	Yes	Yes	Yes
PoE Capable Port	Ports 1 - 48	-	Ports 1 - 8	-	Ports 1 - 8
Power-over-Ethernet	802.3af/at	-	802.3af/at/bt	-	802.3af/at/bt
Total PoE Budget	740W	-	240W	-	420W
Form Factor	19"1U	13"1U	13"1U	13"1U	13"1U
Switching Capacity	176 Gbps	120 Gbps	120 Gbps	240 Gbps	240 Gbps
MAC Address Table Size	16K	16K	16K	32K	32K
Dimensions	440 x 310 x 44 mm	330 x 230 x 44mm	330 x 230 x 44 mm	330 x 230 x 44 mm	330 x 230 x 44 mm

■ **U.S.A**

EnGenius Technologies, Inc.
Costa Mesa, USA
1-714-432-8668
www.engeniustech.com

■ **Canada**

EnGenius Technologies Canada
Ontario, Canada
1-905-940-8181
www.engeniuscanada.com

■ **Europe**

EnGenius Networks Europe B.V.
Eindhoven, Netherlands
31-40-8200-888
www.engeniusnetworks.eu

■ **Asia Pacific**

EnGenius Networks Singapore Pte Ltd.
Singapore
1800-364-3648
www.engeniustech.com.sg

■ **Taiwan**

EnGenius Networks, Inc.
Taipei, Taiwan
886-2-2652-1808
www.engeniustech.com.tw

EnGenius®